



Flat 2, County Mews Sandes Avenue, Kendal



Flat 2

County Mews Sandes Avenue

A well presented first floor apartment situated within this popular development in the market town of Kendal offering a convenient location and level walking distance to all of the local amenities.

The accommodation comprises a sitting room, kitchen, one bedroom and a bathroom. The property benefits from double glazing.

There is also allocated parking making this property ideal for a range of purchasers including first time buyers or the buy to let investor and is offered for sale with no upper chain.

FIRST FLOOR

SITTING ROOM

14' 2" x 10' 1" (4.33m x 3.07m)

Both max. Two double glazed windows, storage heater.

KITCHEN

7' 3" x 7' 3" (2.21m x 2.21m)

Both max. Base and wall units, sink, integrated oven with electric hob, space for fridge freezer, tiled splashback.

BEDROOM

13' 6" x 9' 2" (4.12m x 2.79m)

Both max. Double glazed window, storage heater, built in wardrobe.

BATHROOM

7' 1" x 6' 11" (2.16m x 2.11m)

Both max. Heated towel radiator, three piece suite comprises W.C. wash hand basin and bath with electric shower over, partial tiling to walls, extractor fan.

HALLWAY

7' 11" x 3' 2" (2.41m x 0.96m)

Both max. Built in cupboard housing hot water cylinder.





ALLOCATED PARKING

Allocated parking for one vehicle.

EPC RATING C**SERVICES**

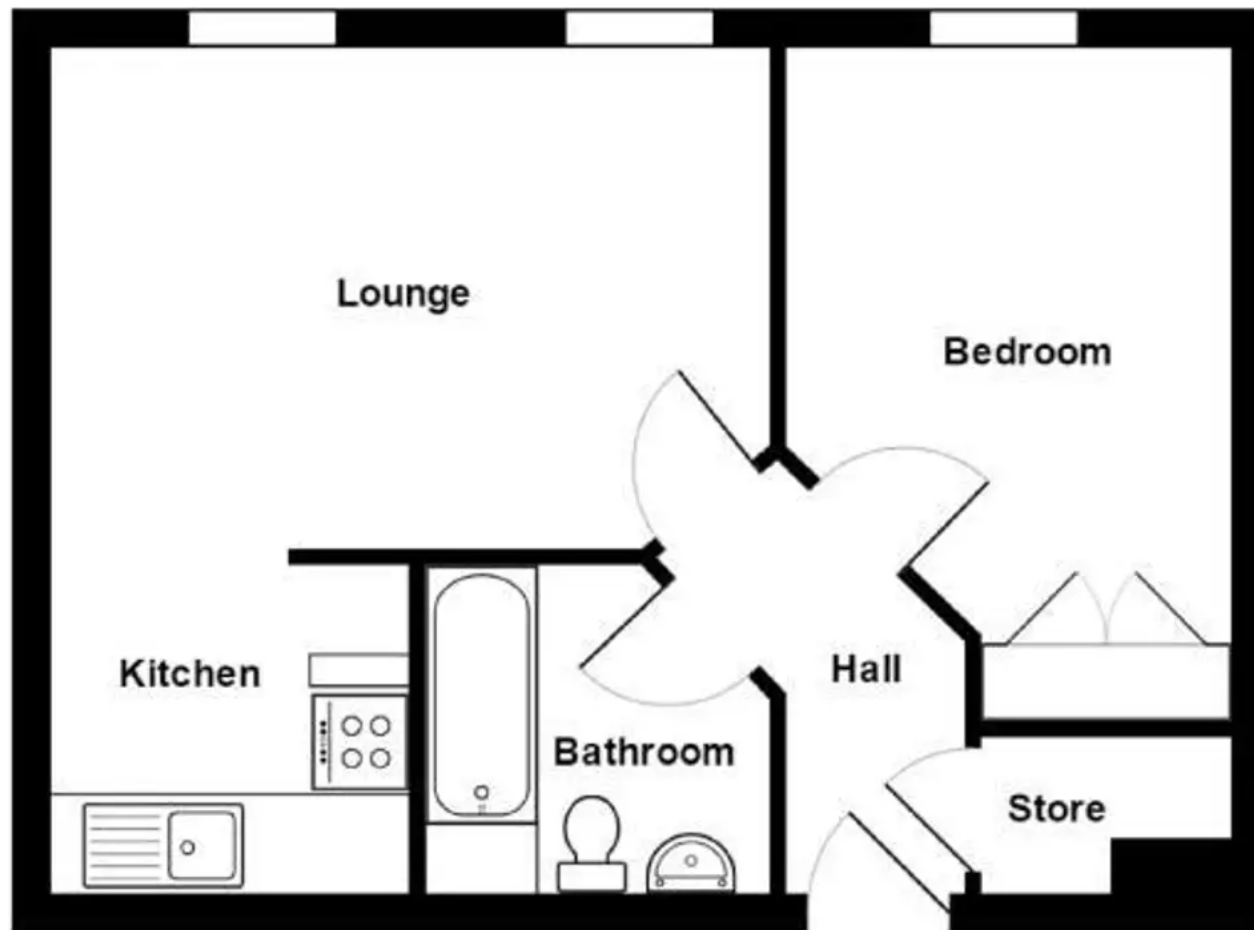
Mains electric, mains water, mains drainage.

COUNCIL TAX: BAND B**TENURE: LEASEHOLD****DIRECTIONS**

From our Kendal office turn right on to Sandes Avenue, and then take the first left hand turn in to County Mews, take the first staircase on the right and number 2 is the second apartment.

WHAT3WORDS:prone.golf.short





First Floor

For illustrative purposes only - not to scale. The position and size of features are approximate only.
© North West Inspector.





THW Estate Agents

112 Stricklandgate, Kendal - LA9 4PU

01539 815700 • kendal@thwestateagents.co.uk • www.thwestateagents.co.uk



Your Local Estate Agents **Thomson Hayton Winkley**